

Olga centrifuge

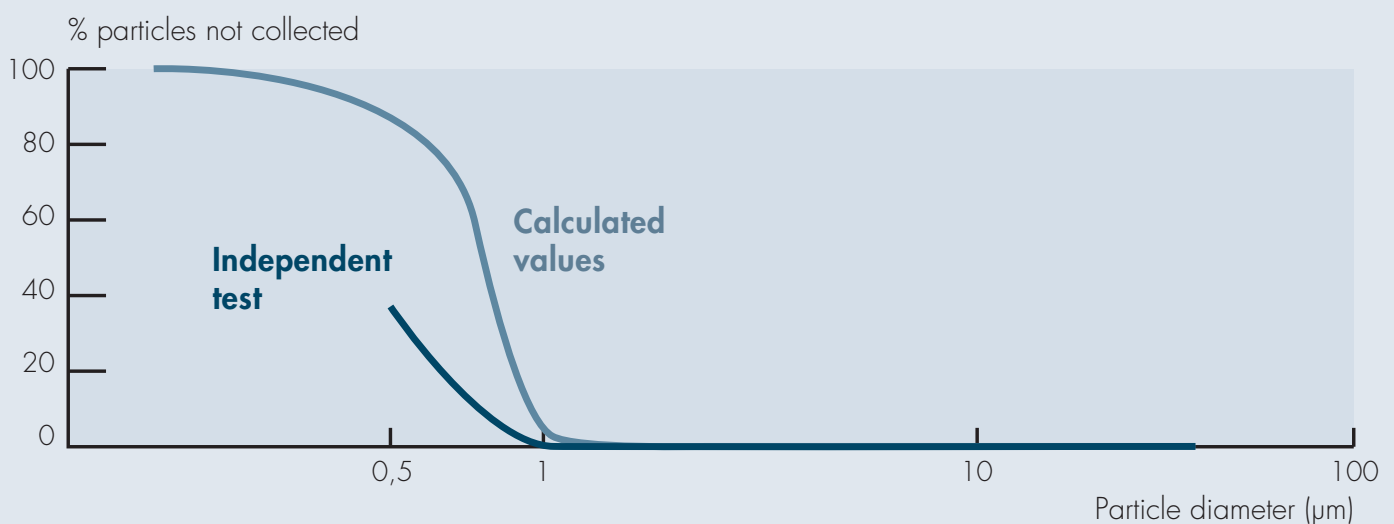


The Olga centrifuge is a high performance particle separation device to treat contaminated air streams specially adapted to handle mixtures of wet and dry particles for industrial applications demanding low particulate emissions.

The compact machine removes a wide range of sticky and viscous material from air streams often allowing the recovered material to be reused. Automated washing and "clean in place" are included where required.

The design is well proven and supported by 5 years stable operating experience. Many installations operate automatically and continuously 24/7 with minimal operator intervention. Key performance parameters such as power consumption and vibrations can be monitored remotely by CentriAir who then advise customer of changes in operation or maintenance requirements.

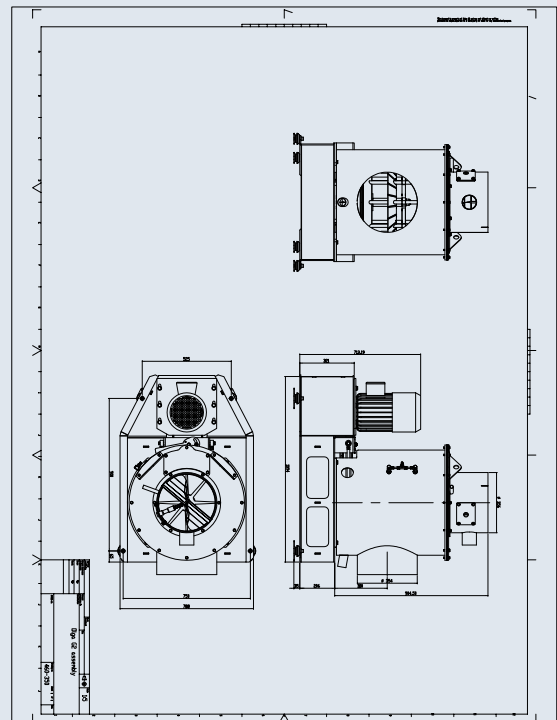
There are no consumables such as filter media and inspection and maintenance is usually planned at annual intervals.



Specification: Centrifugal Separator – Olga Model

Model:	Centriair Olga 3 000
Application:	Removal of entrained solid particles and liquid droplets from contaminated air streams up to 3000 m ³ /hr per centrifuge. Larger flow rates handled by several machines in parallel.
Performance:	Total particle separation down to 1,5 micron
System configuration:	Centrifugal separator with rotating disc stack. Spray nozzles internally in the rotor and on casing to enable internal automatic cleaning with water or other liquid. External fan to overcome the pressure drop, flexible connection to inlet and outlet duct in Viton. Control panel with Siemens HMI screen and remote monitoring. Support frame in stainless steel.
Process gas flow:	max 3000 m ³ /hr
Maximum operating temperature:	115°C
Pressure Drop:	3200 Pa at 3000 rpm and flow of 3000 m ³ /hr through centrifuge
Power Supply:	380-400 V/50 A three phase + Neutral 50 Hz
Installed power:	5,5 kW per centrifuge
Operating power:	2,9 kW per centrifuge
Weight:	350 kg
Connection flanges:	350mm straight flange
Noise level:	< 73 dB (A)
Construction Material:	Stainless Steel AISI 304 wetted seals in viton rubber, motor painted mild steel

The Centrifuge design is protected through a number of international patents.



centriair